

BULLETIN NUMBER: BTB-GRM-040213
 CATEGORY: Software
 BULLETIN: Graphics Resolution Modification
 DATE: April 2, 2013

This document describes the procedure for modifying the TriComm graphics interface software resolution. The TriComm graphics program will automatically adjust the screen artwork to the current computer resolution, but the software must be adjusted as described for proper positioning of the data boxes on the screen. This applies when the design is performed and setup on a computer with different screen resolution than that on the jobsite or other computer.

TriComm v1.9.81 & Later Versions Only

Use Box Adjustment Boxes under graphics programming mode to Modify graphics.txt file for different screen resolutions.

Computer Screen Resolution: 1280 x 1024

Graphics screen size: X = 17100 without taskbar
 Y = 13970 without taskbar
 Original GCS Format 10610 with taskbar

Computer Screen Resolution: 1024 x 768

Graphics screen size: X = 13260 without taskbar
 Y = 10130 without taskbar 9710 with taskbar

Calculations:

Divide the X from the on-site display by 17100 to determine X multiplier
 Divide the Y from the on-site display by 13970 to determine Y multiplier

Examples:

To change from 1280 x 1024 original setup to 1024 x 768:

Multiply X by **.7754** (13260 divided by 17100)
 Multiply Y by **.725** (10130 divided by 13970)

To change from 1024 x 768 original setup to 1280 x 1024:

Multiply X by **1.29** (17100 divided by 13260)
 Multiply Y by **1.379** (13970 divided by 10130)

Screen size is shown in top border of software when in graphics mode. Perform multiplication of X/Y values to determine other combinations

To modify the graphics, open the graphics view by selecting GRAPHICS from the upper menu in the TriComm interface.



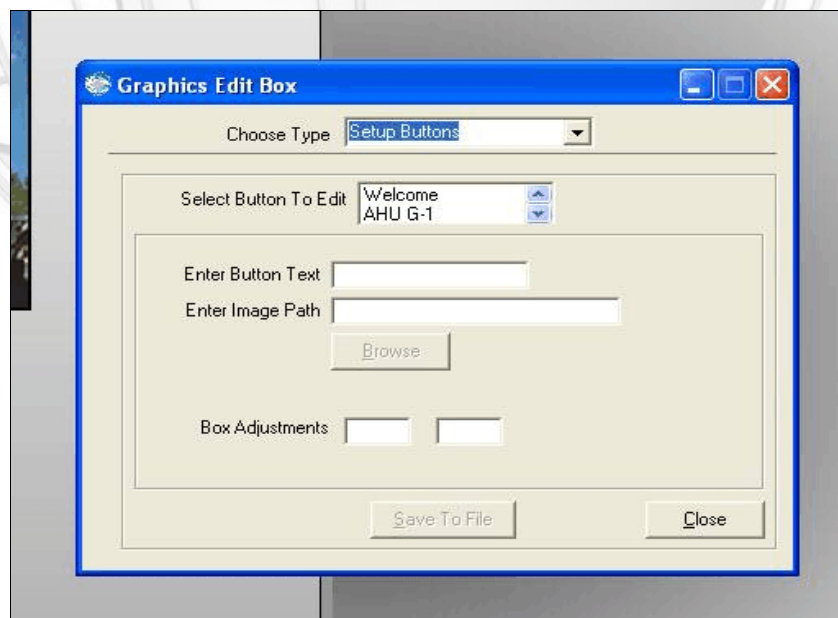
After selecting the Graphics tab, roll down and select **Graphic View**

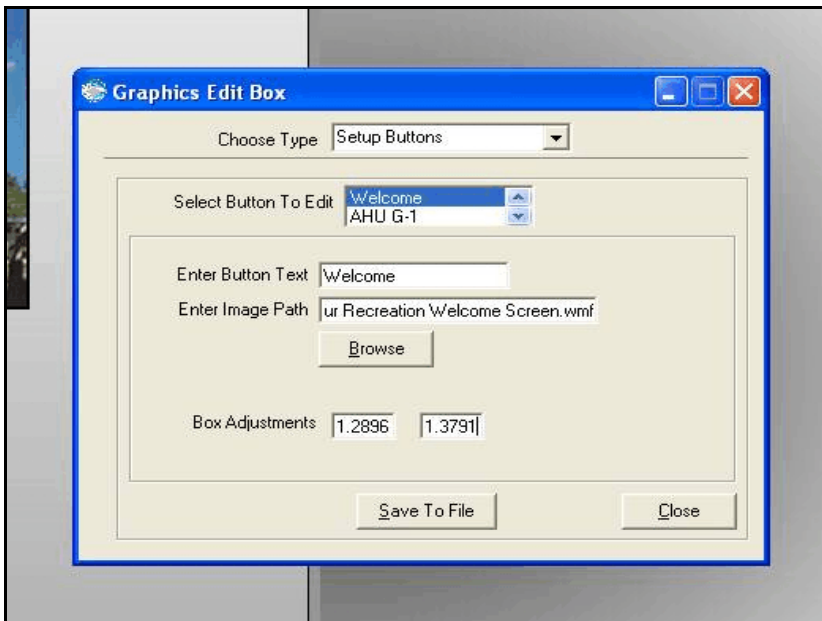
Once you have entered the graphics program, select Graphics Mode from the upper menu bar, and select **Programming Mode**



Hilight and select **Edit Graphics**

The standard Graphics Edit Box will appear as follows:





Leave Setup Buttons in the **Choose Type** window ...

Highlight your **FIRST SCREEN** in the **Select Button to Edit** window ...

Enter the calculated numbers for resolution modification into the **Box Adjustments** windows as shown ...

Select the **Save to File** button to save to the file. The system will not return any message when complete so hit the save button 2-3 times to make sure that the file has been saved.

You **MUST** close this screen then close the graphics to return to the standard TriComm software.

Re-open graphics and check that boxes are aligned properly.

