

BULLETIN NUMBER: BTB-PWD-010606

CATEGORY: Software

BULLETIN: Password Function Setup

DATE: January 6, 2006

The password function is a software based access control for interfacing with the YAMAS control system, and is a software-based program. The passwords are stored as a component of the software, and only reside on the computer being used for access to the system. Make sure that ALL computers used contain the password setup for proper level of interface desired.

Password Level

Password Access

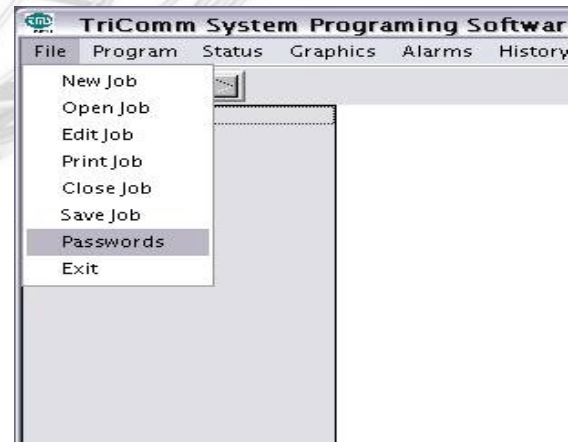
Meter	View and reset demand meters only
0	View graphics only
1	View graphics and change setpoints on graphics screens only
2	View graphics, change setpoints on graphics screens and view text interface board status screens
3	View graphics, change setpoints on graphics, full access to text interface except debug and logic
4	Full system access

Important !!

Make sure to write down and store passwords in a safe place Once a password has been entered, you **MUST** have the password to access the system at any level. Several different passwords may be entered with various levels of access, level 4 must be active to make changes to the passwords.

Setting Up Passwords:

To setup the passwords for your system, run the BASYX TriComm software as normal, but do not connect to a project. From the menu bar at the top of the screen, highlight File and select PASSWORDS from the drop-down menu



Once you have selected the Passwords function, the following screen will prompt you for the initial password:



The initial password to enter the program is **TMSINC**

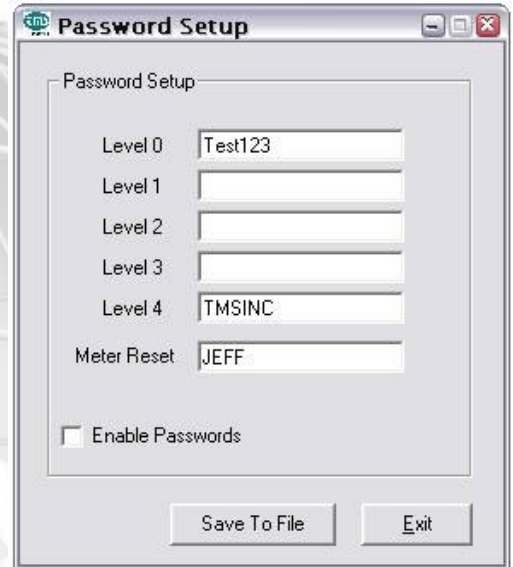
Once the initial password is entered the password assignment screen will appear:

Enter the password desired for the various levels per the list

You may enter different passwords for every level
All passwords are CASE SENSITIVE

If you change Level 4, you change the initial password -

Be sure to note any change to Level 4 password !!



Once you have entered all desired password, check the Enable Passwords box as shown and the hit Save To File



You must close the BASYX TriComm software and re-open the software for this to take effect.

Call your dealer or GCS if you have questions.